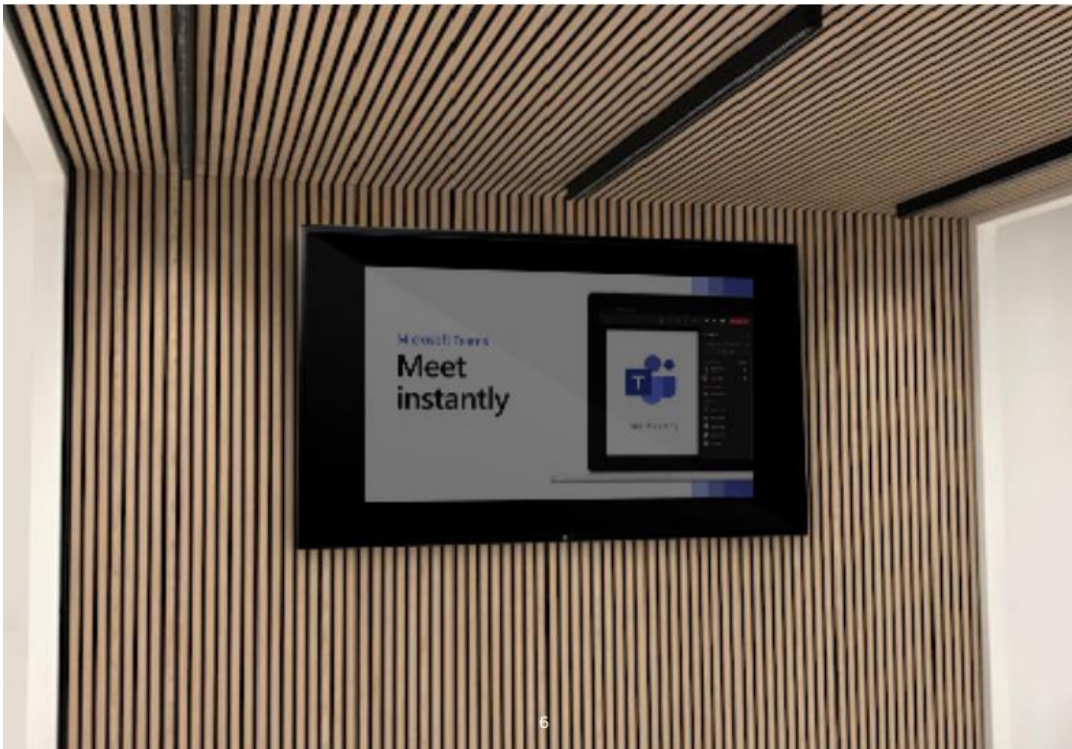


Mavo-dBound Timber Slat

Houten akoestische lamellen voor wanden en plafonds



Aan deze documentatie kunnen geen rechten worden ontleend.
Wijzigingen voorbehouden.

Uitgave: nr.1 d.d.: 13-02-2023

Our Shush Timber Slat™ Veneer finishes



Sizing

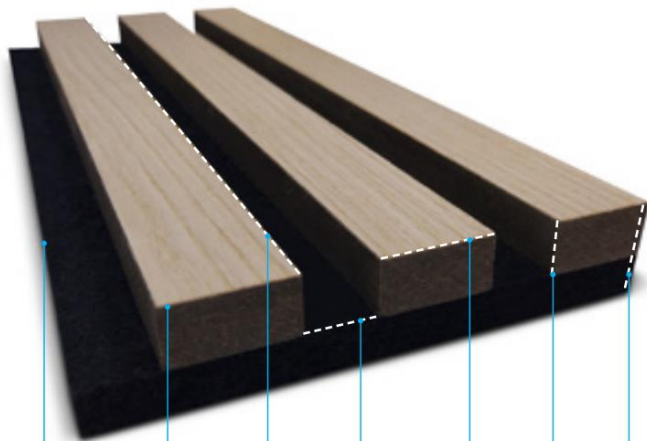
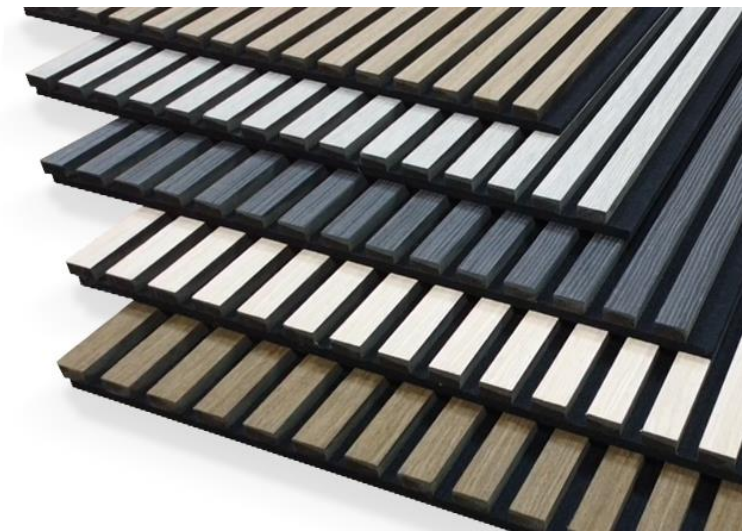
Please note all panels are fixed at:
605 x 2400mm and are available
in five veneer finishes



Aan deze documentatie kunnen geen rechten worden ontleend.
Wijzigingen voorbehouden.

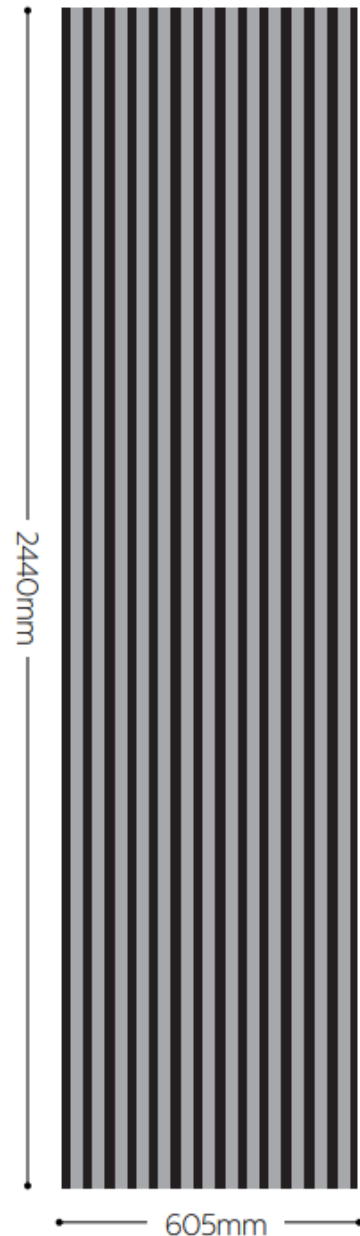
Uitgave: nr.1, d.d.: 14-02-2023

Sound Absorption Coefficient - Shush Timber Slat™.							
Frequency (Hz)	125	250	500	1000	2000	4000	
Shush Timber Slat - Direct to wall	0.05	0.10	0.25	0.65	1.00	0.90	Class D
Shush Timber Slat - 40mm Airgap	0.25	0.80	1.00	1.00	1.00	0.90	Class A



Polyester Panel - P.E.T. - 9mm Timber Slat 2400 (L) Space 15mm 25mm (W) 13mm (D) 22mm

Total thickness: 22mm
Full size: 605 x 2400 x 22mm



Aan deze documentatie kunnen geen rechten worden ontleend.
Wijzigingen voorbehouden.

Uitgave: nr.1, d.d.: 14-02-2023

Installation Guide

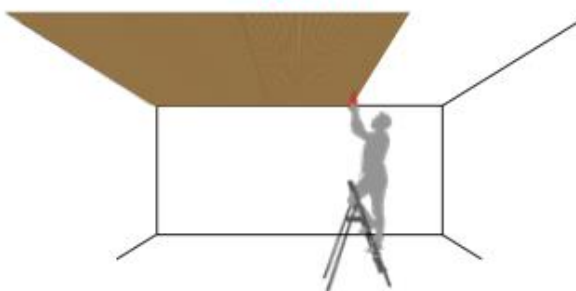
Tools Required



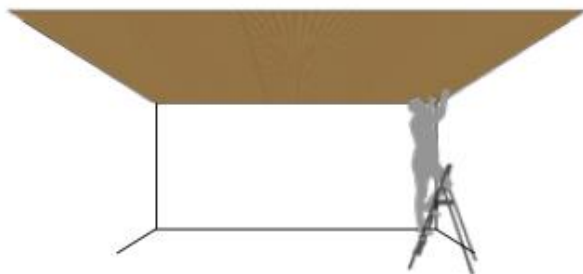
Ceiling Installation

Start by preparing the ceiling. Clean the wall and remove any screws, nails and other obstacles on the wall.

Direct fixing



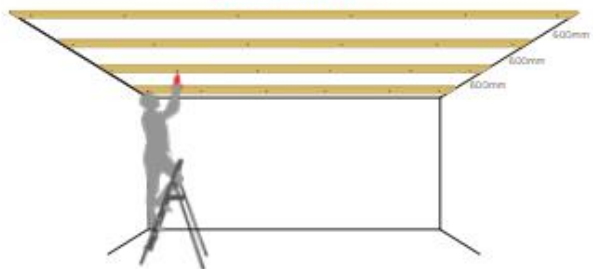
Directly fitted panels.



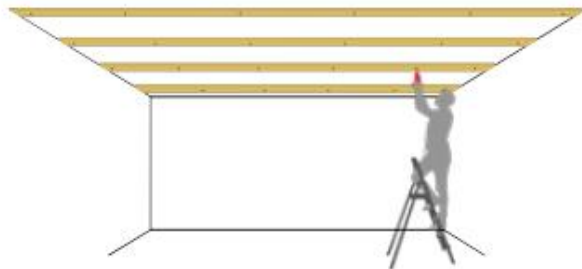
Mount the panel on the ceiling by drilling the screws (35 mm.) through the polyester and into the ceiling. We recommend 16 screws per panel.



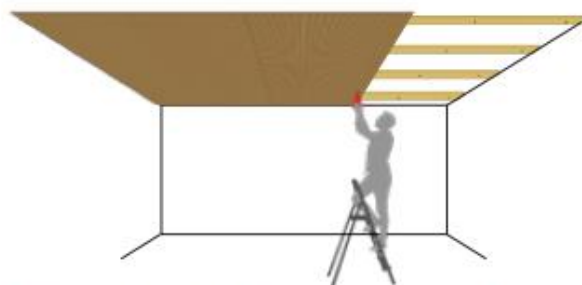
Batten fixing



Place the battens as per the above spacing.



The battens create an air gap once the panels are fitted which helps with the acoustics.



Mount the panel to the battens by drilling the screws (35 mm.) through the polyester and into the wall. We recommend 16 screws per panel.

Note: SoundHush Ltd will not accept any liability for the loss or damage that may occur of any kind which is outside of our control. We strongly instruct to make sure the product suitability is confirmed by doing your own tests. Panels MUST be checked for colour shading differences, flaws, defects or damage prior to installation. Once installation has been commenced, the panels are deemed to have arrived in perfect condition - any of the above reported after installation will not be covered by your warranty.

Aan deze documentatie kunnen geen rechten worden ontleend.
Wijzigingen voorbehouden.

Uitgave: nr.1, d.d.: 14-02-2023